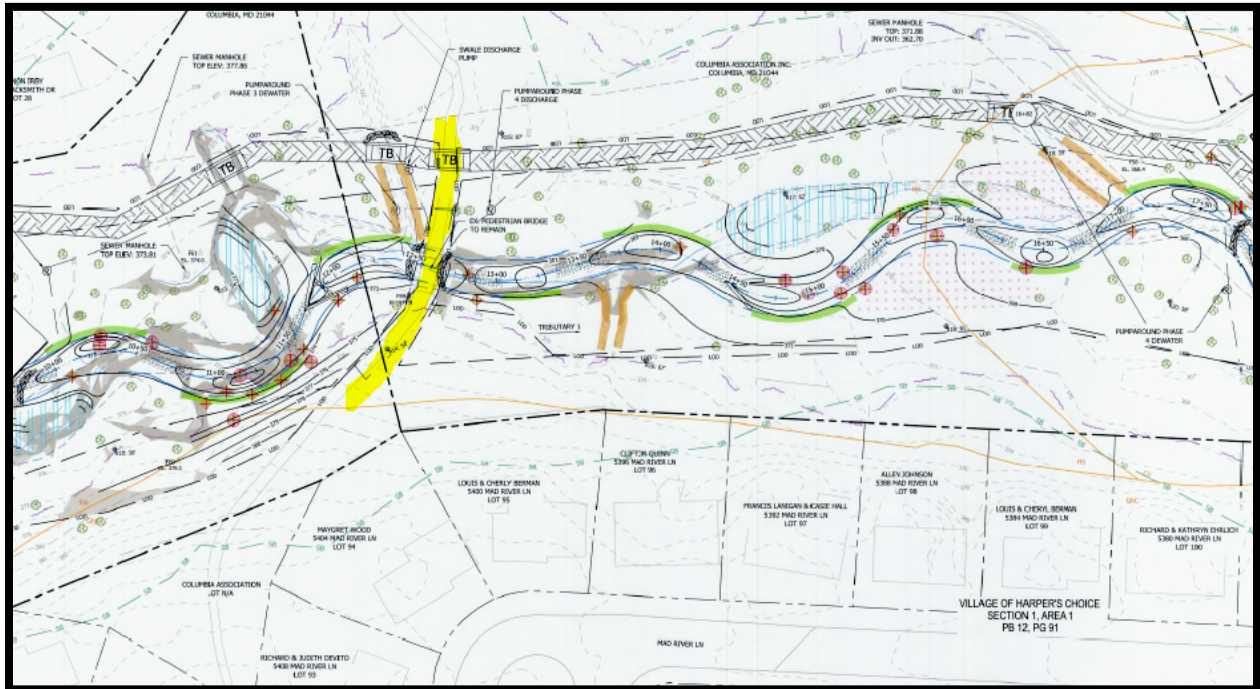
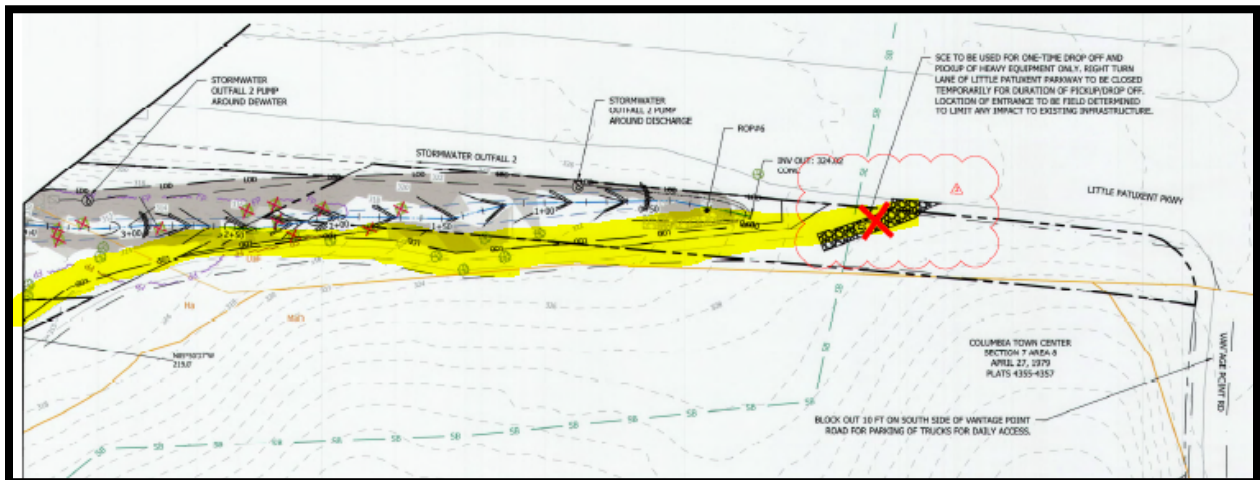


Trail Closing Schedule

The trail behind 5400 Mad River Lane will continue to see work hour closures until approximately November 16th. After that, our work on Trib. 1 is expected to be downstream of the pedestrian bridge with no further trail impact.



Beginning on or about December 1st, the trail running from the bus stop on Little Patuxent Parkway towards Lake Kittamaqundi will see work hour closures for approximately 2-3 weeks. This is the only expected trail impact while working on Trib. 3.



As we get closer to completing Trib.s 1 & 3, we will have a better feel for trail impacts in the Trib. 2 area between Eliots Oak Rd. and Faulkner Ridge Circle.